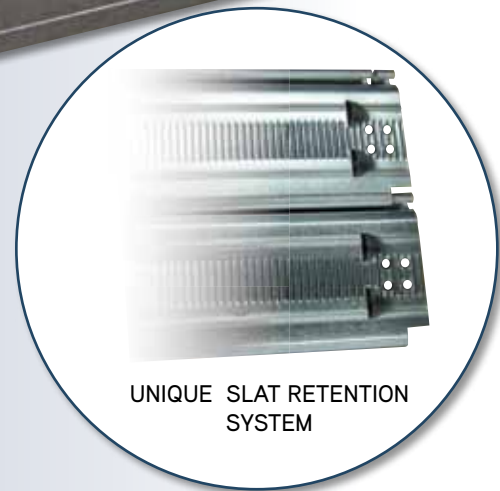


MIRAGE

D O O R S

STEEL ROLLER SHUTTERS

S115 COMMERCIAL SHUTTER



UNIQUE SLAT RETENTION SYSTEM

Mirage S115 commercial steel roller shutters are available with 0.6mm or 0.8mm thick 115mm high slats, cater for openings up to 6m high and 6m wide and provide enhanced security by using an integral windlock system and guides.

APPLICATIONS

Mirage S115 Commercial steel roller shutters can be used in loading docks, storage areas in warehouses, factories, schools, tertiary institutions and any application where a cost effective solution is desired.

Call 1800 465 599 or visit www.miragedoors.com.au

Member of the
AMgroup

RECOMMENDED SPECIFICATIONS

S115 Commercial Steel Roller Shutters as manufactured by Mirage Doors.

CURTAIN

The standard slat supply is solid with no clips. It can be offered without a windlock system and with nylon clips if required.

S115 BOTTOM RAIL

- Extruded aluminium T – section (standard);
- An optional 80mm x 40mm steel galvanised box section is available;
- Weatherseals are supplied standard on all bottom rail types.

SIZE

Maximum shutter sizes:

S115 - 6000mm wide x 6000mm high (If larger is required our Heavy Duty S100 will help fulfill these requirements).

OPERATION

- Manual by hand (up to 6m²);
- Chain operation (up to 25.0m²);
- Electric operations by a 0.37kw (0.5 HP) / 0.75kw (1HP) single / 3 phase direct chain drive motorisation. Incorporating a springless drum and safety brake. Includes a standard up, down & stop controller and an emergency chain operation in the event of power failure.

LOCKING

- Manual operation - shoot bolts (supply & install of padlocks are by others);
- Chain operation - chain keeper (supply & install of padlocks are by others);
- Electric operation - no manual locking provided (the motor provides locking security).

DRUM

The drum is manufactured from a steel tube and attached to end caps. The drum is fitted with two solid axles and revolves on steel bearings.

SLATS

Slats are 115mm high and are available in two material thicknesses – 0.6mm or 0.8mm.

GUIDES

Standard 86mm x 37mm rolled windlock channel (2.5mm thick Galvabond)

BRACKET

The brackets are fabricated from mild steel and supplied in a primer paint finish.

CURTAIN FINISH

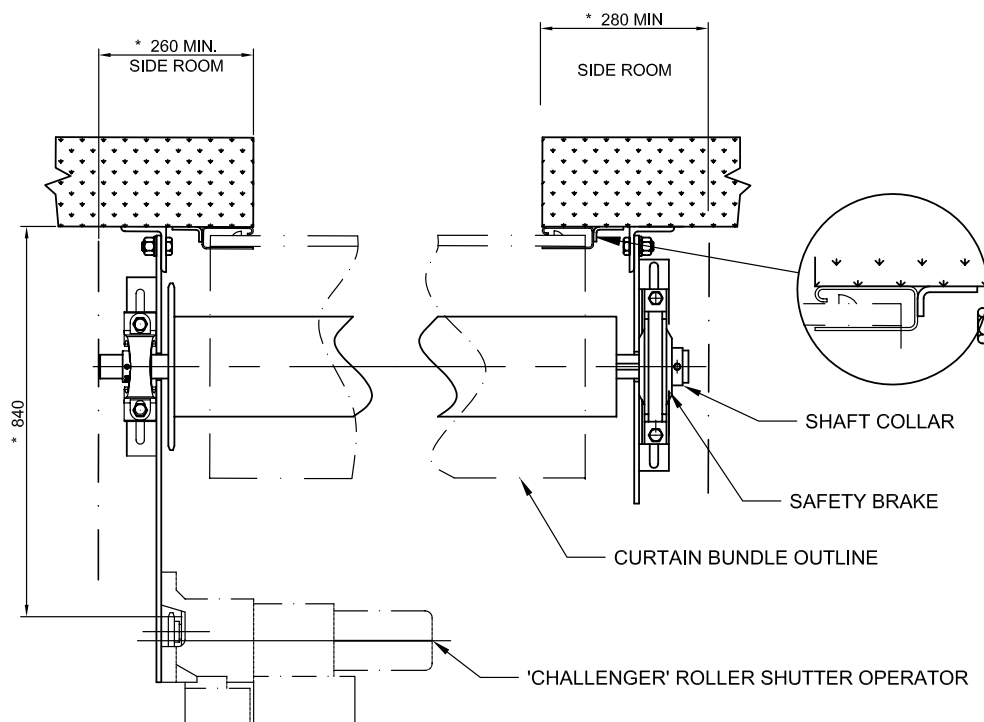
- Galvabond steel (standard)
- Polyester powdercoat colours (selected from manufacturers powdercoat colour charts). Please note that Metallic or Pearl powdercoat finishes are not recommended for roller shutter products.

INSTALLATION AND CLEARANCE DETAILS

Refer to Technical Sheets: 9A & 9B.

TIPS FOR ARCHITECTS, SHOPFITTERS & BUILDERS

- Preparation of openings to suit the S115 commercial roller shutter is by others. The shutter must not be installed to hollow stud walls. Refer to the Technical Data sheets to ensure adequate opening preparation;
- If required, provision of jambs, cladding of columns, bulkheads and ceiling slot adjustments are by others;
- The architect must always specify the intended usage of shutters. This will enable appropriate drum and motor selections to be made.



Mirage Doors has a continuous program of product development and reserves the right to change specifications at any time without notice.